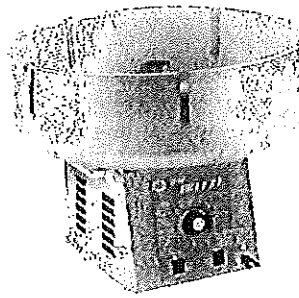


**RHODE
ISLAND
RENTALS**

COTTON CANDY MACHINE

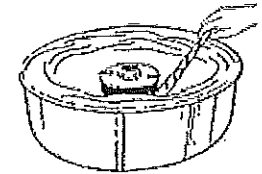
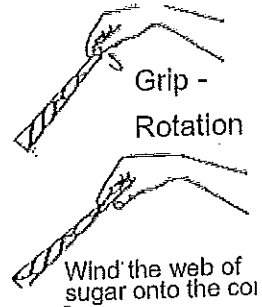


ELECTRICAL REQUIREMENTS

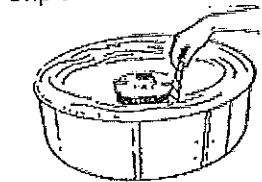
The GOLD MEDAL ECONO-FLOSS / MEGA-FLOSS MACHINE is ready to plug into a 15 amp, 120 volt, 60 cycle standard wall receptacle. Maximum amp draw for the unit at 120 volts is 9 amperes.

MACHINE OPERATION

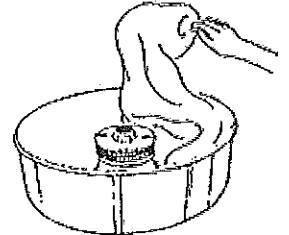
1. Plug in floss machine.
2. Without motor running, fill floss head about 90% full with sugar. DO NOT OVERFILL! When ever you add sugar to the floss head, always fill it about 90% full. This is necessary to obtain a balanced condition in the floss head or excessive vibration will occur. NEVER ADD SUGAR WHEN MOTOR IS RUNNING. After adding FLOSSUGAR you may turn motor back "ON".
3. Turn MAIN SWITCH and HEAT SWITCH to "ON" position to make cotton candy floss.
4. Turn heat control knob in the clockwise position to maximum setting. This setting will produce the fastest possible warm up.
5. The machine should begin to make floss in a few seconds.



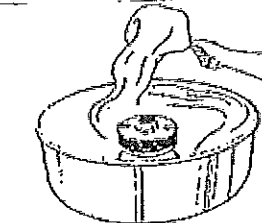
Grip cone as shown.



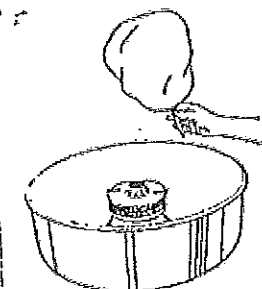
Break into web of floss with the cone.



Remember:
Let the machine do the work



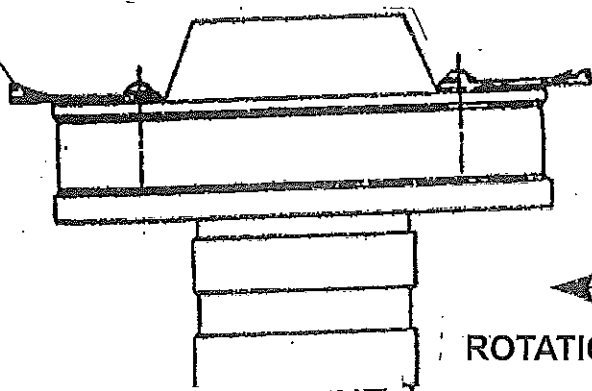
Lift web of floss from the pan and roll onto the cone



Hold an inch or two of the pointed end of the cone between your two fingers and your thumb. With a light flicking action, break the web of floss that is building up in the pan and roll onto cone. Lift up the cone with the ring of floss attached and - by rotating the cone - roll the floss onto it. DO NOT ROLL FLOSS ONTO THE CONE WHILE IT IS INSIDE THE PAN. This will just pack the floss onto the cone.

When stopping operation for the day or any prolonged period, it is good to run all the sugar out of the floss head. When empty, turn the heat to the highest position for approximately one minute to somewhat "clean" the band. NEVER ALLOW WATER TO ENTER THE FLOSS HEAD.

Leather
Floater



FLOATER ADJUSTMENT

Form leather floaters as shown. This creates a lifting action to float the floss across the gap to the side of the floss pan.

ROTATION

⚠ DANGER



You must have the floss machine grounded! No exceptions!!!

⚠ CAUTION



Keep hands away from spinning head!